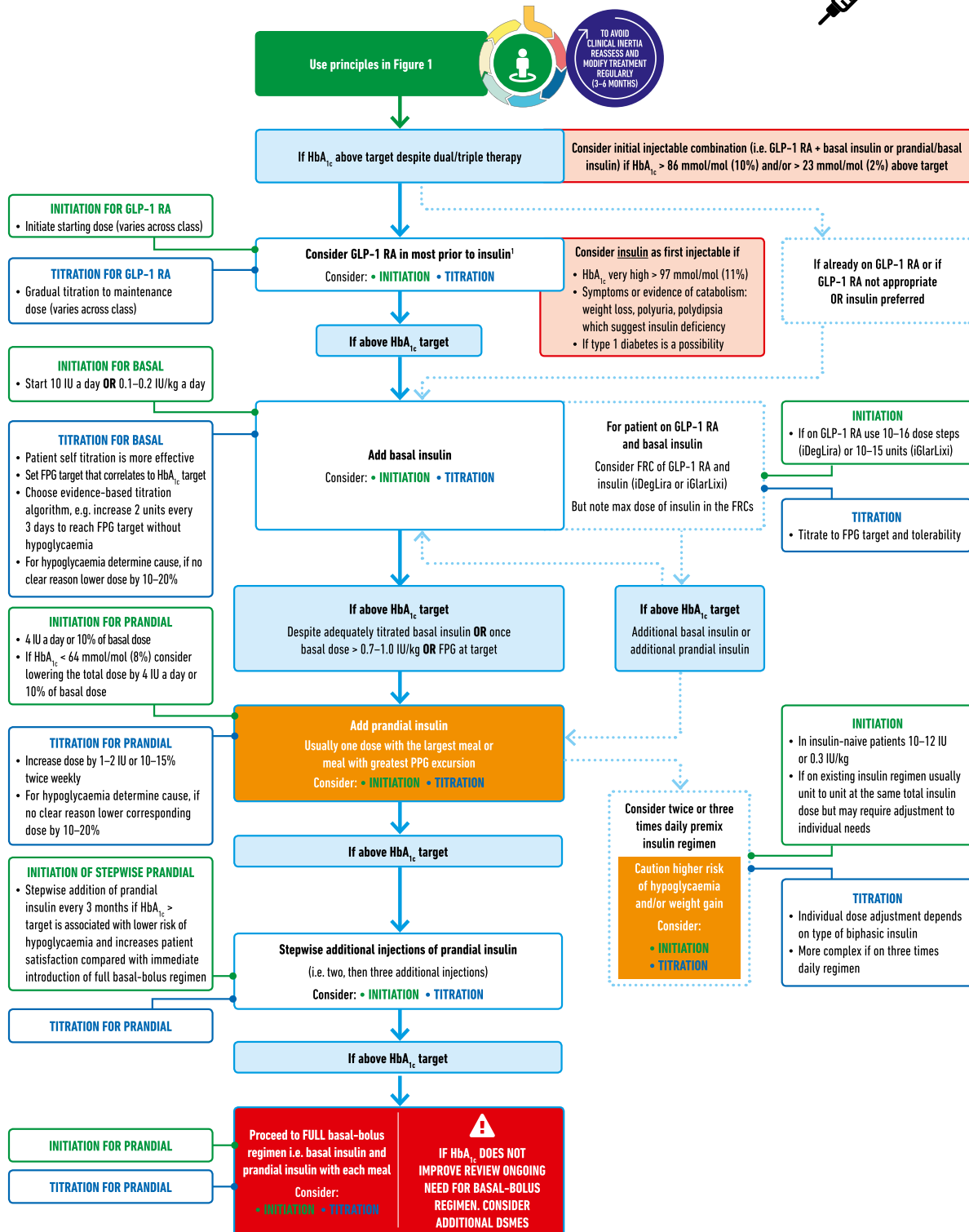


INTENSIFYING TO INJECTABLE THERAPIES



1. Consider choice of GLP-1 RA considering: patient preference, HbA_{1c} lowering, weight-lowering effect or frequency of injection. If CVD, consider GLP-1 RA with proven CVD benefit

FPG = Fasting Plasma Glucose
FRC = Fixed Ratio Combination
PPG = Post Prandial Glucose

Fig. 7 Intensifying to injectable therapies